

## Specifications

備注 (Remark)

1. 材料 (Material)

膠芯: PA9T /LCP+30%G.F UL94V-0, 顏色: 黑色

Housing: PA9T/LCP+30%G.F UL94V-0, Color: Black

端子: 磷銅

Contact: Phosphor Bronze

2. 特性 (characteristics):

額定電流: 3.00AMP

Rating Current: 3.00AMP

接觸阻抗: 20mΩ Max

Contact Resistance: 20mΩ Max

絕緣阻抗: 1000MΩ Min

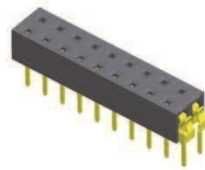
Insulating Resistance: 1000 MΩ Min

耐電壓: AC 1000V/分钟

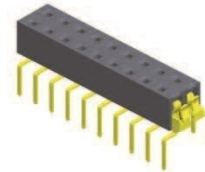
Withstanding Voltage: AC 1000V/Minute

溫度範圍: -40° C to +105° C

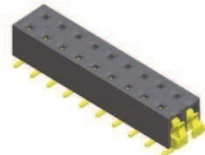
Temperature Range: -40° C to +105° C



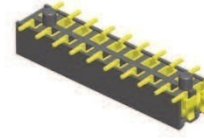
BF254-22PXXX355X1



BF254-22WXXX355X1

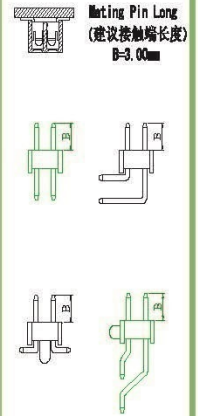


BF254-22SXXX355X1

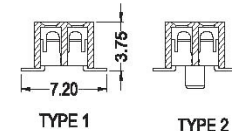
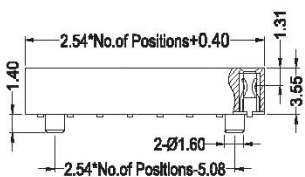
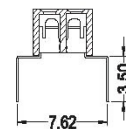
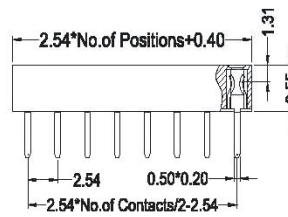
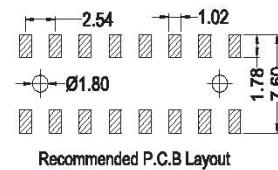
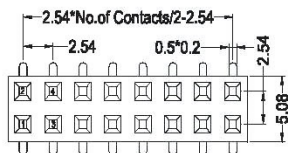
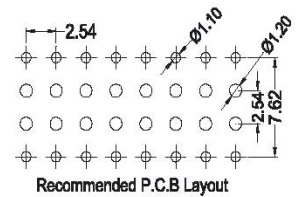
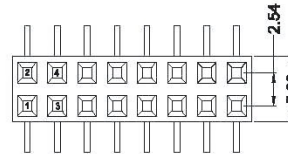
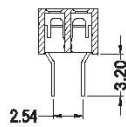
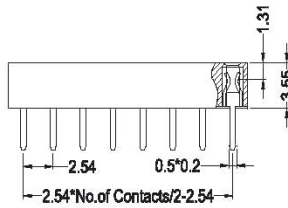
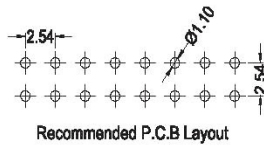
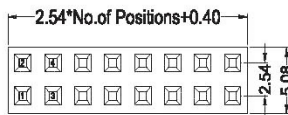


BF254-22SXXX355X2

Mating With/配對公差:



FEMALE HEADER



BF254-22

X

XX

XX

355

X

X

**Contact Shape:**  
P: Straight  
S: SMT  
W: Bottom Entry

**No. Of Pins Per Row**  
02~40P

**Contact Plating**  
Full Of Gold  
G0=0.8u"  
~  
G9=30u"  
S1=Ordinary Tin Plated  
S2=Matte Tin Plated  
S3=Tin-plated High-temperature

**Packing**  
A: PE Bag  
R: Tape & Reel  
T: Tube  
D: Tube+CAP  
E: Tray

**Journal Number**  
1: Type1 (without Post)  
2: Type2 (with Post)